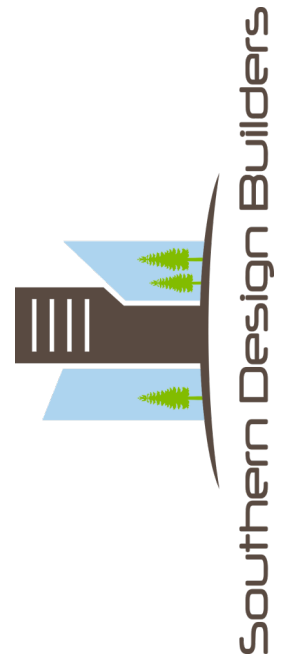


# The Savannah 1300 Plan



## Quality Construction Features

New Home Builders Service Warranty

### Energy Efficiency Features

- “Low E” Dual Pane Vinyl Windows
- High Efficiency Mechanical System:
  - 92% Efficient Furnace
  - 14 Seer energy Efficient Heat Pump
  - Programmable Thermostat
- Water Conserving Faucets and Fixtures
- Premium Insulation Package
  - R-13 Wall Insulation
  - R-30 Attic Insulation
  - R-19 Insulation Under Floor

### Structural Features

- Trenched Footers with Concrete
- Brick, Block, or Slab Foundations
- 2x10 Floor Joists
- OSB Sheathing with House Wrap
- Structurally Engineered Roof Truss Systems

### Exterior Features

- Architectural Shingles
- Maintenance-Free Vinyl Siding and Trim
- Raised panel Shutters (per plan)
- Custom Front Door Allowance
- Brick, Rock, or Hardee Board also available

### Interior Features

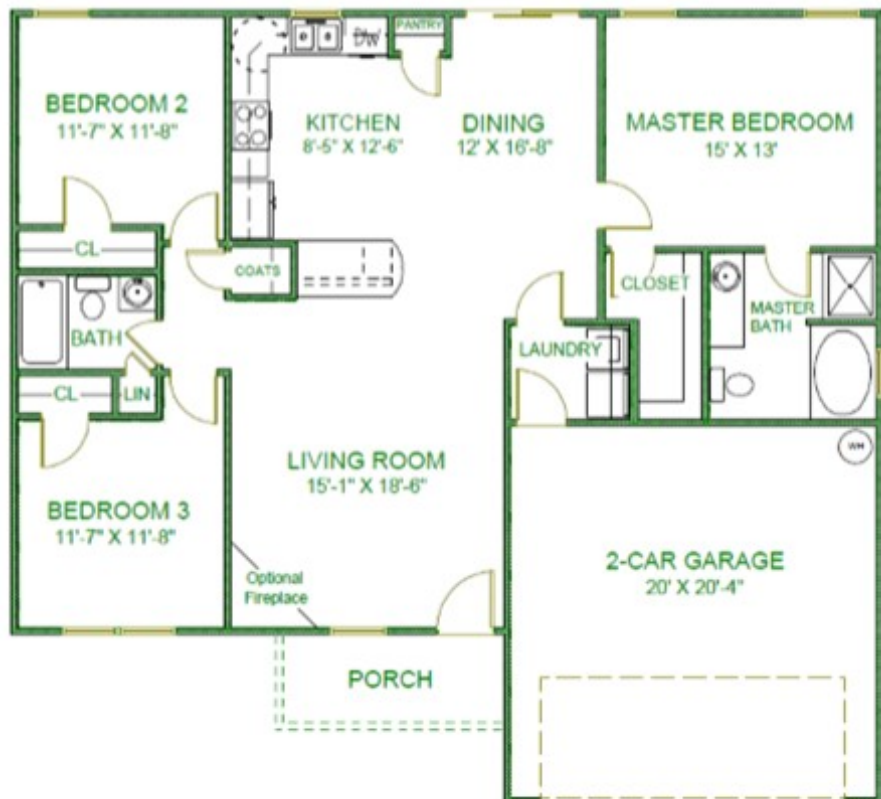
- Custom Cabinetry Allowance
- Custom Countertop Allowance
- 8” Double Bowl Stainless Steel Sink
- Farmhouse or other Sink options also available
- Recessed Lighting in Kitchen
- Custom Interior Lighting Allowance
- Interior Door Design Choices
- Oversized Mirrors
- Elongated Comfort Height Toilet in Master
- Garden Tub (per plan)
- Chrome Faucets by Delta or Moen
- Carpet & Vinyl Flooring by Allowance
- Tile & Hardwood flooring also available

1300 sq ft  
3 Bedroom

Craftsman Style  
More Home for the Money



\*\*\*Custom construction on your home site. We can easily modify this plan or any other plan!\*\*\*



[www.SDBonYourLot.com](http://www.SDBonYourLot.com)