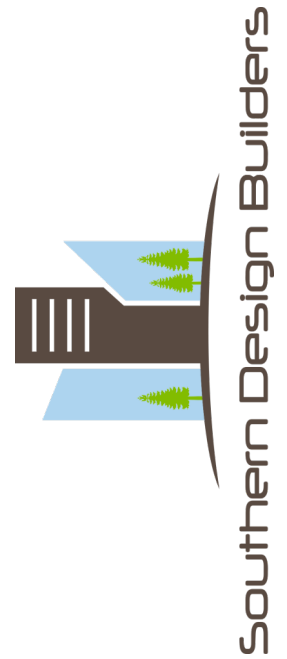


The Sherwood 1635 Plan



Quality Construction Features

New Home Builders Service Warranty

Energy Efficiency Features

- “Low E” Dual Pane Vinyl Windows
- High Efficiency Mechanical System:
 - 92% Efficient Furnace
 - 14 Seer energy Efficient Heat Pump
 - Programmable Thermostat
- Water Conserving Faucets and Fixtures
- Premium Insulation Package
 - R-13 Wall Insulation
 - R-30 Attic Insulation
 - R-19 Insulation Under Floor

Structural Features

- Trenched Footers with Concrete
- Brick, Block, or Slab Foundations
- 2x10 Floor Joists
- OSB Sheathing with House Wrap
- Structurally Engineered Roof Truss Systems

Exterior Features

- Architectural Shingles
- Maintenance-Free Vinyl Siding and Trim
- Raised panel Shutters (per plan)
- Custom Front Door Allowance
- Brick, Rock, or Hardee Board also available

Interior Features

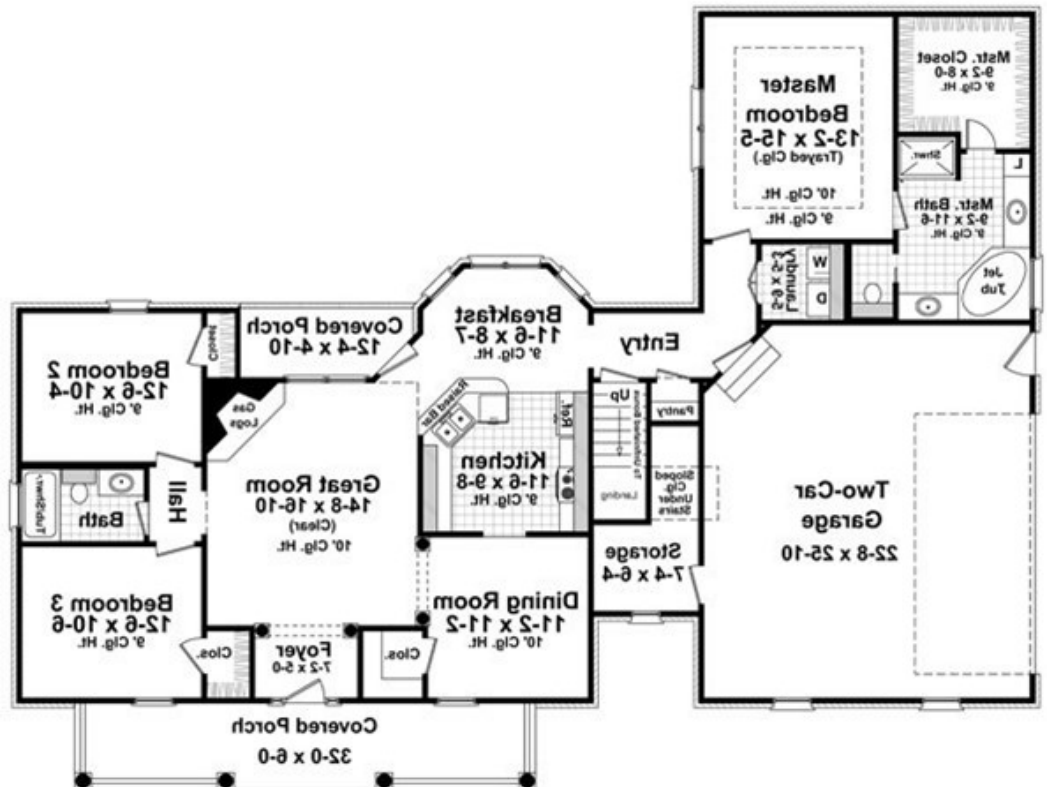
- Custom Cabinetry Allowance
- Custom Countertop Allowance
- 8” Double Bowl Stainless Steel Sink
- Farmhouse or other Sink options also available
- Recessed Lighting in Kitchen
- Custom Interior Lighting Allowance
- Interior Door Design Choices
- Oversized Mirrors
- Elongated Comfort Height Toilet in Master
- Garden Tub (per plan)
- Chrome Faucets by Delta or Moen
- Carpet & Vinyl Flooring by Allowance
- Tile & Hardwood flooring also available

1635 sq ft
3 Bedroom

Craftsman Style
Optional Bonus



Custom construction on your home site. We can easily modify this plan or any other plan!



www.SDBonYourLot.com